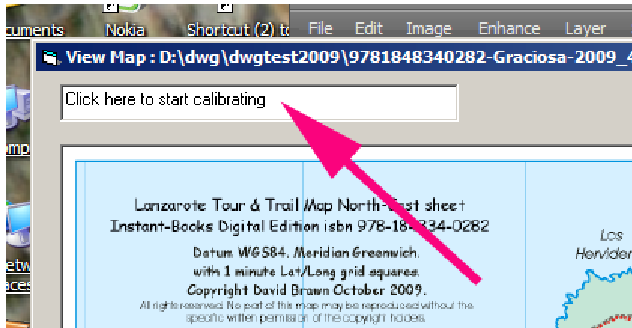


Calibrating maps with MAPC2MAPC

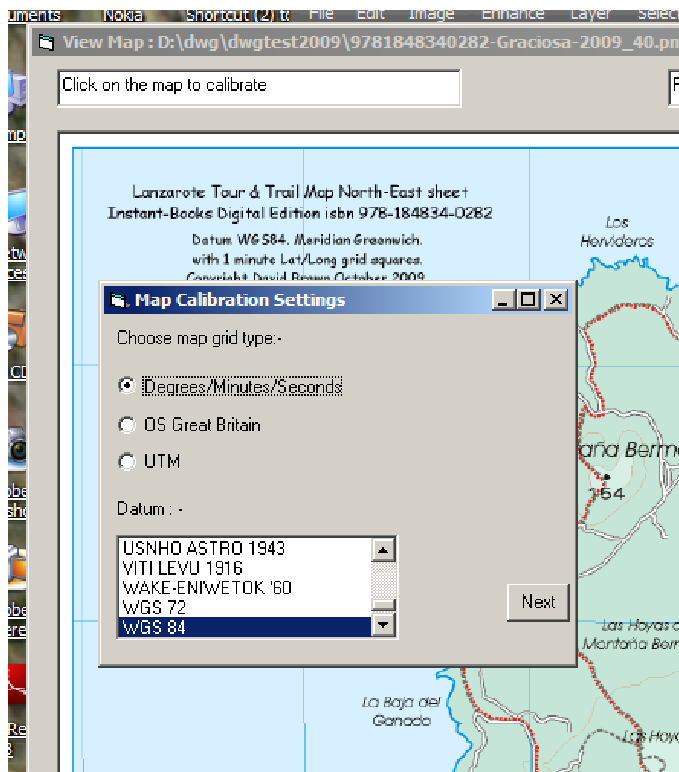
Use File>Load Map for Calibration.

The map is first displayed to fit the available screen. To see it full size, click “Full” and then use the L, R U and D buttons to move around the map. Left click moves a whole screen, Right click half a screen, Middle click the whole map.

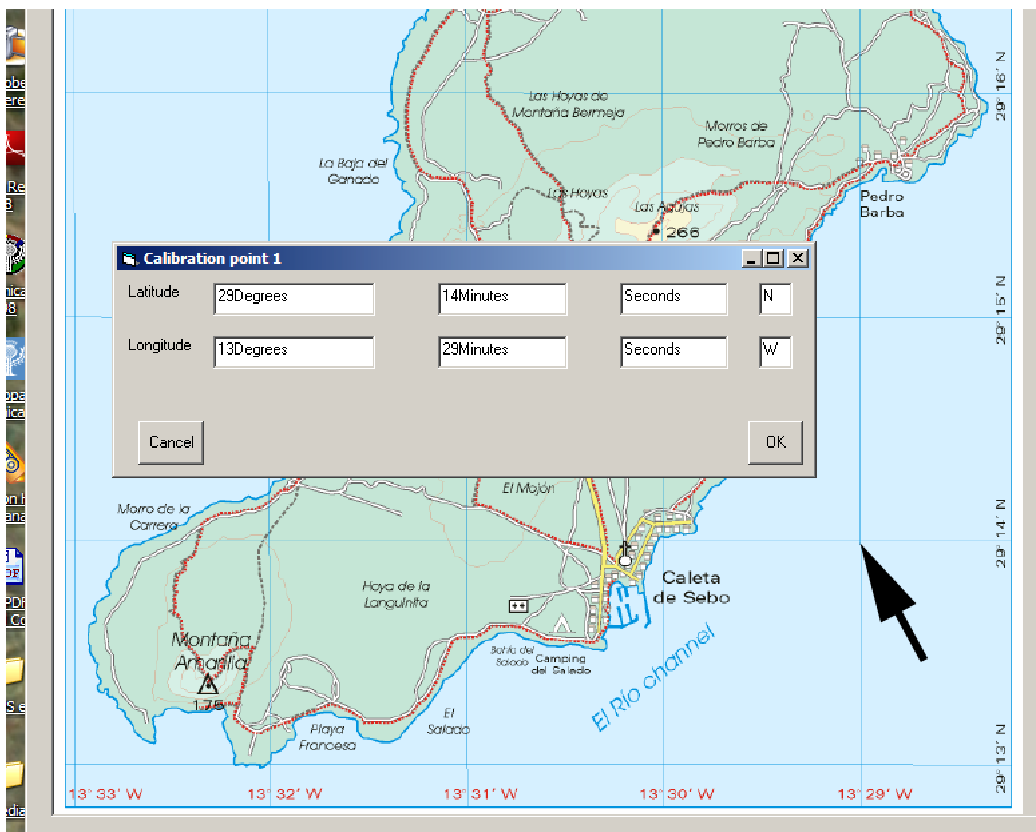
Click on “Click here to start calibrating



Select the method and Datum.



Click on 2 or more points (preferably at least 3) and enter the coordinates.



To adjust the position of a calibration point, right-click it.



After the points have been input click "Click here to finish"



You can check the calibration with View>View Calibrated map.

On the View window you can right-click a point to adjust it or choose to delete it; a middle-click allows you to add a new calibration point. The calibration is only recalculated when the View window is closed. The coordinates and grid shown on the View window are WGS84 – if the map is not WGS84 the lines will not match.

Then File>Write Calibrations

